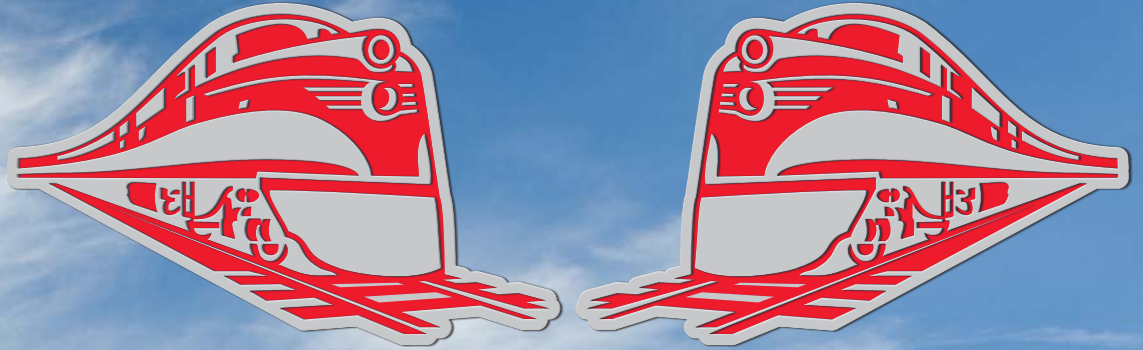


Rj Corman Signaling, LLC





Rj Corman Signaling, LLC



R. J. Corman Signaling can meet the toughest signaling demands by reducing overall project cost and lead time, and by doing the job right the first time.

From designing a simple highway crossing warning system to providing a complete turnkey signaling solution, we bring that same well-renowned R. J. Corman sense of urgency and expertise to your project. Let us put our team to work for you.

Right Business Partner

We are one of the few full service signal companies where every employee in the company is e-RAILSAFE and Roadway Worker Training certified. We also own, operate and maintain almost 1000 miles of our own infrastructure, so we live with some of the same challenges faced by our customers, and we know how to work together to resolve them in the most effective way.

Services Include:

- Engineering
- Wiring
- Construction
- Logistics
- Material Warehousing



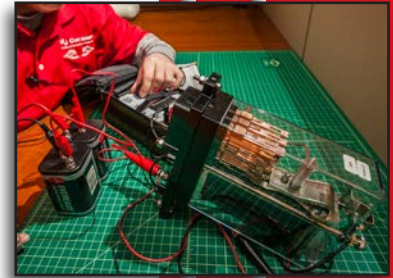


Rj Corman Signaling, LLC



Engineering

R. J. Corman offers engineering talent from every facet of railroading, providing design solutions for projects ranging from the simplest highway grade crossing to more complex interlockings and complete subdivision signal upgrades. Our team is experienced in applying traditional relay logic, as well as the latest vital processor controlled equipment, including required PTC implementation. With all the tools available, we offer comprehensive site surveys, preliminary engineering, design, application software design including simulation and rack-testing, and As-In-Service. **(See Page 4-5)**



Wiring & Assembly

With 35,000 square feet of wiring shop space, R. J. Corman is committed to supporting our customers' growing demands. Our wiring shop employees have applied experience in wiring houses, assembling signals, and factory testing for both Class One and Regional/Shortline railroads. Each shop task follows a controlled and well-documented process, which allows for R. J. Corman to achieve repeatable and high-level results and complete visibility of scheduled work. **(See Page 6-7)**



Material Warehousing & Logistics

R. J. Corman works with customers as vested partners to ensure we can support their material needs during the normal course of business, but also to support emergencies, or when items have simply slipped through the cracks. If material isn't on the shelf, it doesn't help solve an immediate demand. We drive daily interaction with our customers and respond to their evolving business demands to profile what materials should be in the pipeline and what should be on the shelf. With strategically located warehouses and material yards, supported by our own inter-company delivery service, no one can deliver material more efficiently and with a higher level of value. **(See Page 8-9)**

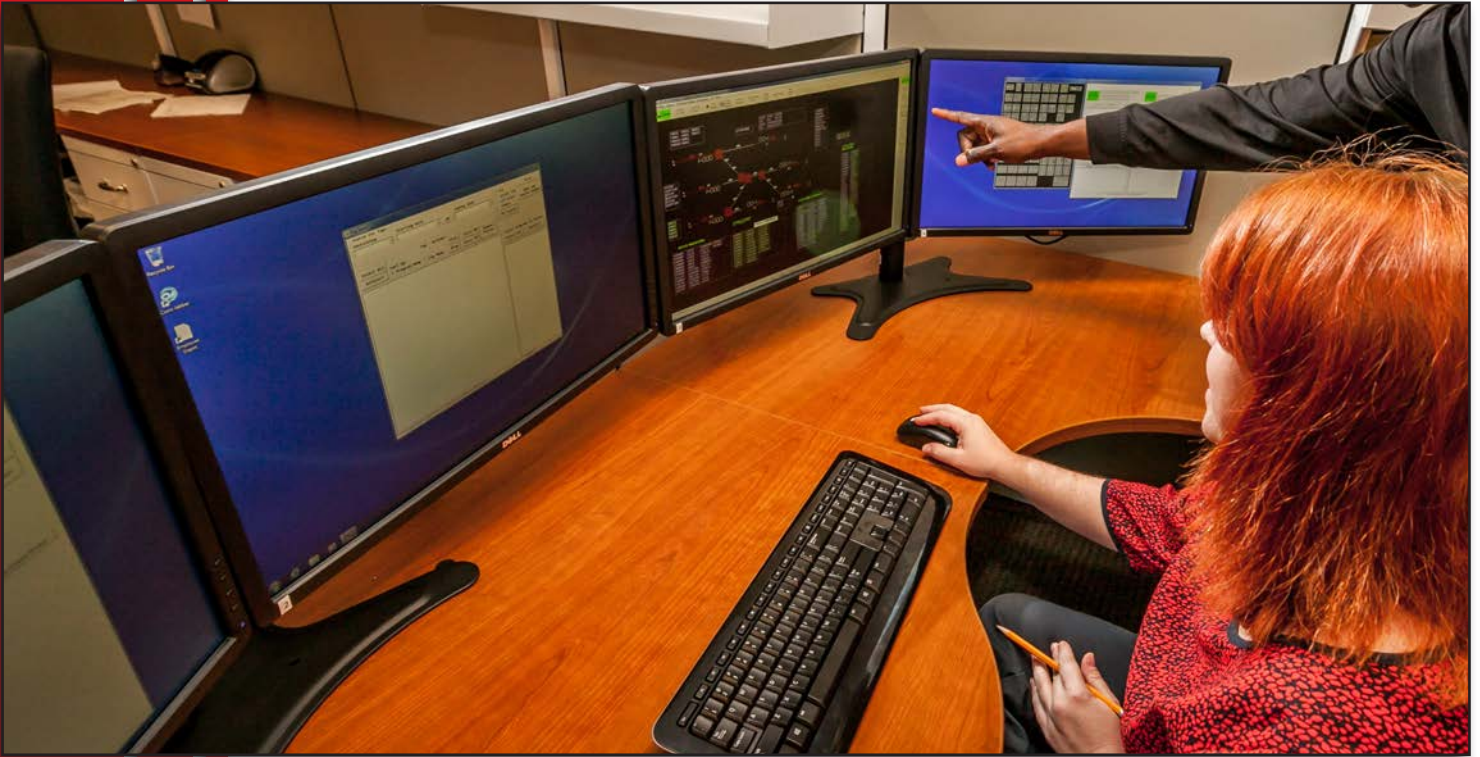


Construction

R. J. Corman is equipped to perform any sized project, from a single highway crossing warning system to a large, multi-faceted turnkey project. Our team has resources from our other companies to offer everything related to track, signal, and communications using the same work force and equipment. Our Signal Construction forces are experienced with Class One and Shortline railroads, offering installation and field support for all phases of Signal and Communications projects, including in-service testing. **(See Page 10-11)**



ENGINEERING



Knowledge

People are the most important and valuable resource an engineering company has. Our dedication and investment in creating a working environment that actively promotes the advancement of knowledge and skill is one of the keys to our long-term success. We accomplish this through mentoring and promoting the use of collaboration tools so that lessons learned are not lost to history, but are shared across our team.

At the core, we have engineering talent from every facet of railroading, from the largest and most respected Class One railroads, signal equipment manufacturers and signal service companies. Our employees have designed everything from the simplest highway crossing warning systems to the most complex interlockings and signal systems, and we have experience in applying traditional relay logic, the latest vital processor controlled equipment and everything in between.



Process Controls

Every task has a time-tested and documented process to control the consistency of the work being done. This makes it easier to achieve consistently positive results, as well as highlight anomalies that may indicate the need for closer scrutiny, and maybe an improvement in the process.

Planning

No task or project is so small that it cannot benefit from a well thought-out plan. A thoughtful plan saves time and effort, and produces superior results, especially when driven by proven process controls.

In support of good planning is execution, driven and measured by the most modern, commercially available project management tools to ensure we are communicating expectations, documenting progress and keeping things on track, on time and within budget.

Prepared

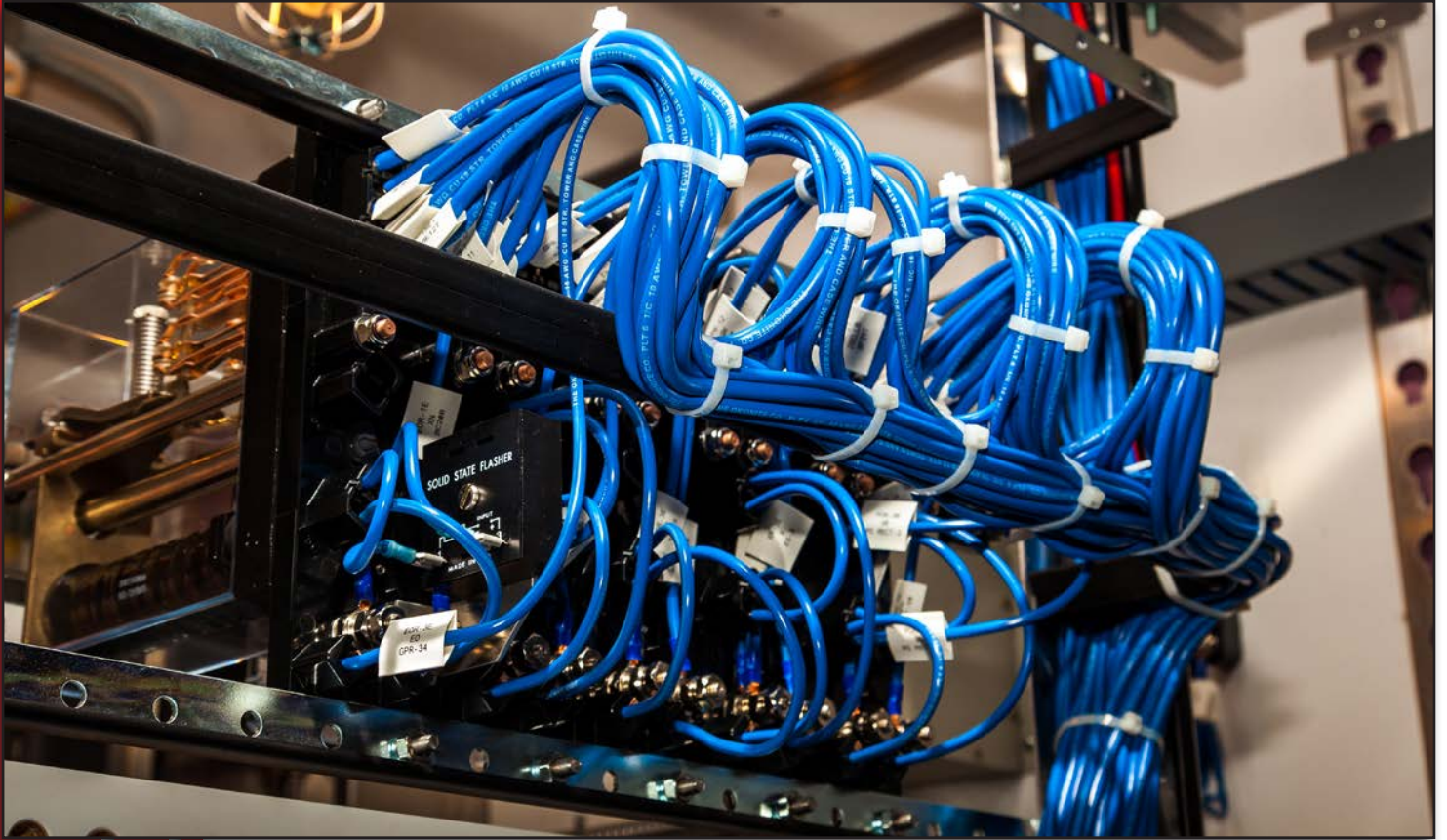
We have all the tools required to get the work done properly. Including Industry standard CADD systems, color printers, plotters, and scanners, leading edge collaboration and networking tools, programming and simulation tools, and extensive reference libraries.



Services Include:

- Project Scoping
- Surveying
- Estimating
- Circuit Design
- Case/House Layout & Detailing
- CADD
- Plotting & Printing
- Plan Distribution
- Circuit and Vital Logic Verification
- Vital Logic Programming
- Material Requirements
- Wire Tags
- Simulation
- FRA Regulatory & Configuration Management Audits
- Project Management
- Cut-In Support
- In-Service Revisions
- Reconstructing Engineering Plans
- Consulting

WIRING & ASSEMBLY



Knowledge

Our employees have many years of experience wiring cases/houses, assembling signals and factory testing for Class One, regional, shortline and transit customers, and they stand ready to put that experience to work on your next project.

Services Include:

- Case/House Layout
- Point to Point Wiring
- Wire Tag Making
- Signal Assembly
- Operational Testing & Documentation
- Project Material Packaging



Process Controls

Each shop task follows a consistent and well-documented process to achieve repeatable and high-level results. Controlled processes allow for visibility of scheduled work and provide the ability to promote growth and improvement.

Capacity

With 35,000 square feet of carefully planned case/house wiring and signal assembly space, no company is more vested in supporting our customers' demands. Whether it's a single project, or 50 projects a month, R. J. Corman Signaling has the capacity and the dedication to live up to the challenge.

Additionally, our wiring shop is located on our corporate campus with over a million square feet of space under roof, and surrounded by capable and available labor of every skill level.

Prepared

We have all the tools and equipment, including industry standard and calibrated tools, simulation and test fixtures, compartmentalized wiring stations, stocked warehouse of "floor stock" items, shipping and packaging tools and materials.



MATERIAL WAREHOUSING



Right Inventory

If it's not on the shelf, it doesn't help solve an immediate demand. That's when business costs skyrocket because you're having to solve a problem that wouldn't have otherwise existed.

We work with our customers as vested business partners to ensure we can support them during the normal course of business, but also to support their more immediate needs driven by catastrophic events, or when things simply slip through the cracks.

We use sophisticated tools and algorithms to profile what should be in the supply chain pipeline, and what should be on the shelf, then we talk to our customers to find out what is working and what is not working so we can provide what is truly needed. This is not a system that works on autopilot, but one that enjoys being driven by daily interaction with our customers, and is as dynamic as their evolving business demands.

Business is dynamic, so business solutions should be capable of evolving with the speed of your business.

We are currently providing sole-source materials & logistics services for a handful of Shortline and Terminal railroads, as well as project-based services for many Class One railroads.

& LOGISTICS

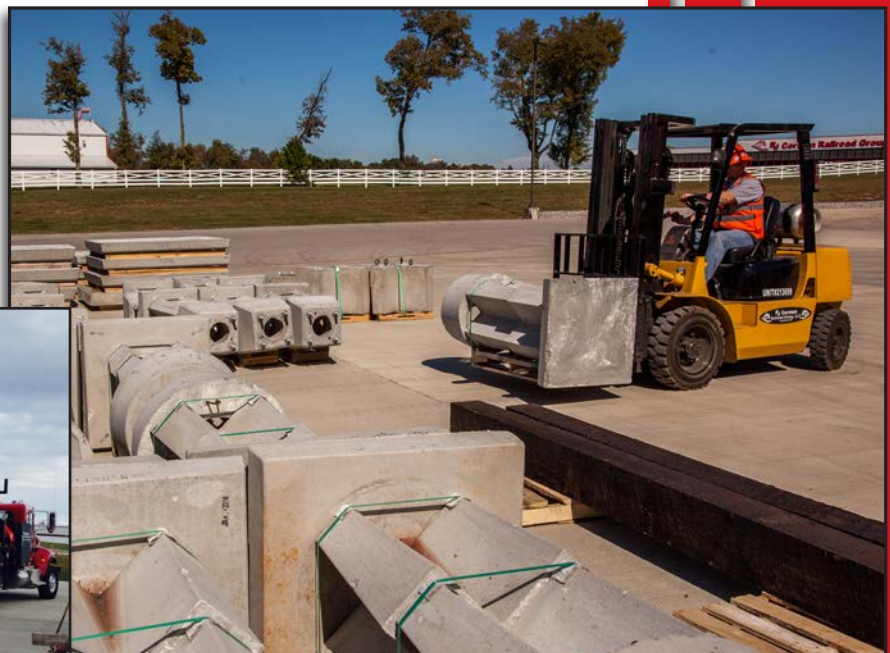


We Deliver

With strategically located warehouses and material yards, supported by our own inter-facility and last-mile delivery services, no one can deliver material with a higher level of value. We are not just a warehousing service, we are a material logistics service that meets the exact needs of our customers. Whether it's simply using a third party carrier or meeting a project team on the job site with the right material at the right time, and with the right equipment to off-load, we have the capability and the expertise to support the way our customers work.

Services Include:

- Material Warehousing
- Material Logistics
- Custom Length Cable Cutting
- Packaging
- Project Coordination
- Custom Delivery Services



CONSTRUCTION



Knowledge

Whether it's an individual highway crossing warning system or a large, multi-faceted turnkey project, we are equipped to build the road bed and to do everything related to track, signal, and communications, with the same work force, same equipment.

That's what we do every day for our own railroads, and we can do it for you. Our One Source approach means we mobilize once, work with the same labor force and equipment across multiple disciplines and coordinate the work activities. That saves you time and money. Let us put that experience to work on your next project.

Services Include:

- Project Scoping
- Project Management
- Heavy Excavation
- Roadbed Preparation
- Wayside Signal & Highway Crossing Warning System Installation
- Switch & Track Construction
- Ditching
- Roadway Work
- Project Cutover
- Consulting
- In-Service Testing / Plan Revisions



Planning

Every project includes a well thought-out plan, which provides efficiencies and drives project schedules.

In support of a well-planned project, each task is driven by good communication and well-documented process controls.

Prepared

We have the equipment to get the job done right. From heavy excavation equipment and specialty track equipment to the most sophisticated signal and communication test equipment.

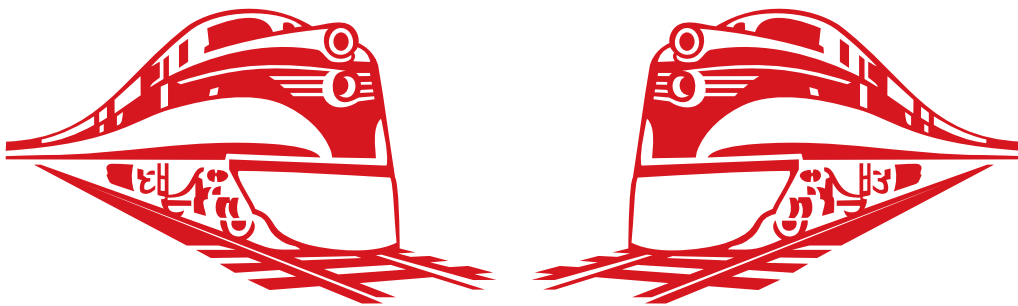


Spruce Creek Siding Signal & Track Construction

MAJOR SCOPE ITEMS

- Installation and surfacing of over 3,200 TF of rail with concrete ties
- Removal and installation of turnouts
- Reconfiguration of 8 crossings due to siding extension
- Addition of 1 new intermediate signal and removal of 2 intermediate signals
- Removal of existing control point
- Installation of new power switch and signals
- Re-cabling, pre-testing and placing in-service
- Installation of new intermediate signal due to end of siding being relocated, providing adequate braking distance
- Removal of 2 intermediate signals due to end of siding extension

Rj Corman Signaling, LLC



www.rjcorman.com · 1-859-881-7521