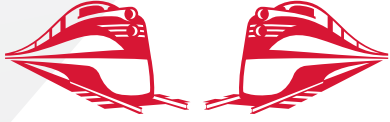


# RJ Corman

Railroad Company



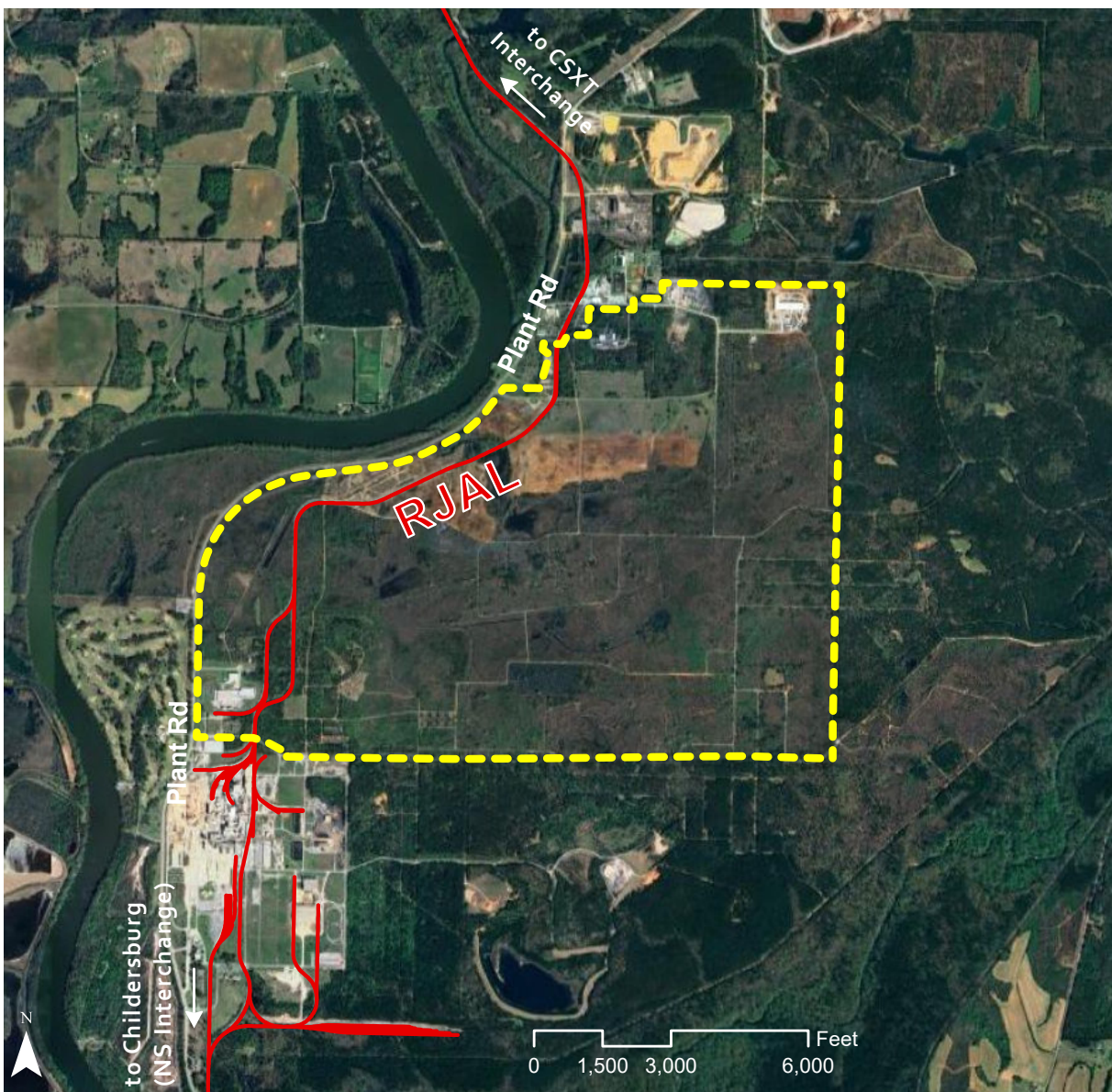
## CHILDERSBURG INDUSTRIAL PARK CHILDERSBURG, AL

### OVERVIEW

**TYPE:** SITE  
**ACRES:** 1,622  
**DIVISIBLE:** YES

**ZONING:** HEAVY INDUSTRIAL  
**OWNERSHIP:** PUBLIC  
**FOR SALE/ LEASE:** SALE

**PRICE PER ACRE** \$10,000-  
\$20,000



INDUSTRIAL DEVELOPMENT SITE

# CHILDERSBURG INDUSTRIAL PARK

## CHILDERSBURG, AL

### LOCATION

**Latitude, Longitude:** 33.3487, -86.3373

**County:** Talladega

### PROPERTY DETAILS

**Due Diligence Conducted:** Environmental, Geotechnical, Wetlands

### UTILITY

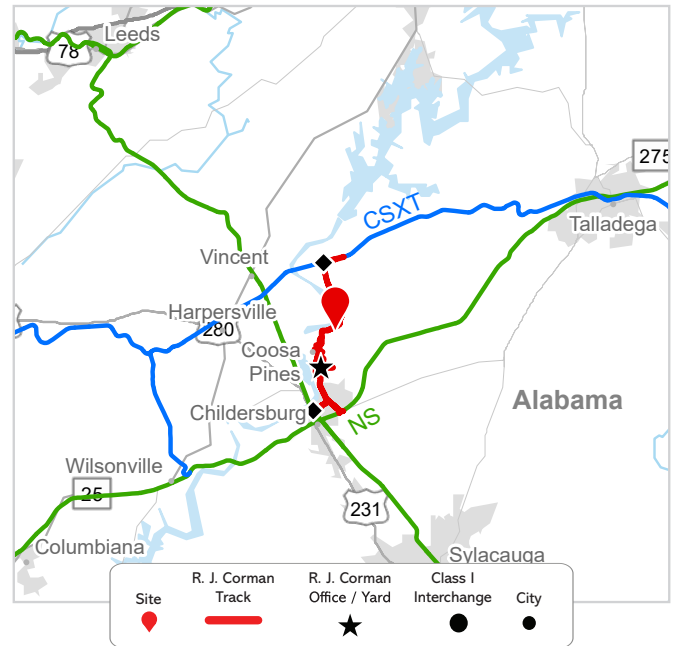
**Electric Provider / Details:** Alabama Power Company / 12.47kV, 115kV, and 230 kV line adjacent to property

**Water Provider / Details:** Childersburg Water, Sewer and Gas Board / 8" line > 1 mile

**Sewer Provider / Details:** Childersburg Water, Sewer, and Gas Board / 8" force main at SW corner of site

**Gas Provider / Details:** Childersburg Water, Sewer, and Gas Board / 10" transmission line at 500 psi, 4" distribution line

**Telecom Provider / Details:** AT&T, Coosa Valley Electric Cooperative / Available to site



### TRANSPORTATION

**Nearest Highway / Distance:** SR 235 / Adjacent

**Nearest Interstate / Distance:** I-459 / 35 miles

**Nearest Airport / Distance:** Birmingham International (BHM) / 40 miles

### R. J. CORMAN

**Closest Distribution Center:** Gadsden Material Sales Yard

**Closest Transloading Facility:** Gadsden Yard

**Class I Interchange Partner(s):** CSX & Norfolk Southern

**Interchange Points(s):** Childersburg (CSX and NS)

**Served by:** RIAL

