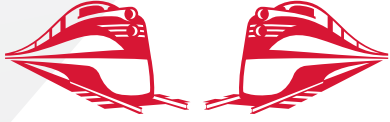


RJ Corman

Railroad Company



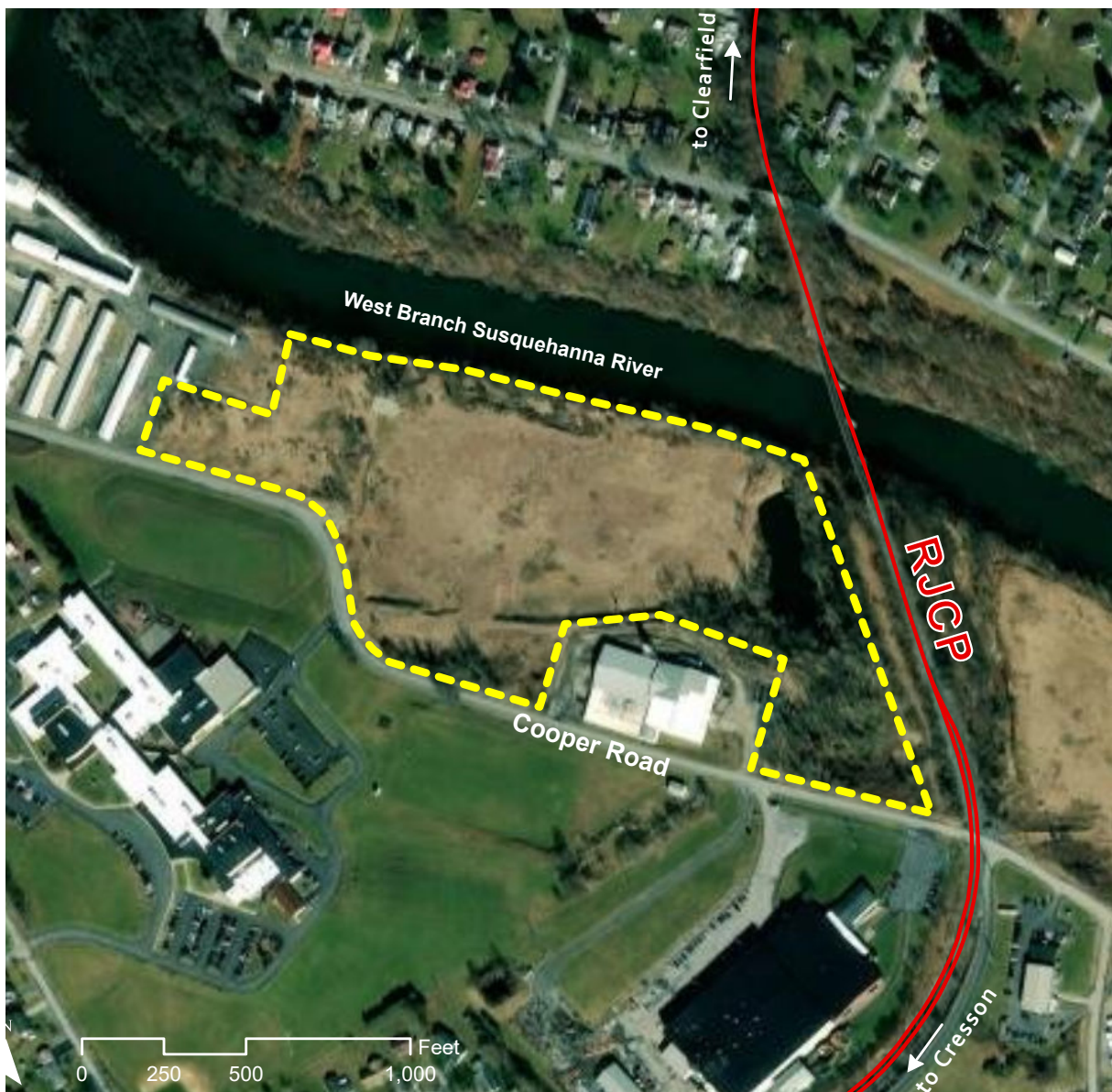
CURWENSVILLE INDUSTRIAL PARK CURWENSVILLE, PA

OVERVIEW

TYPE: SITE - REMEDIATED
BROWNFIELD
ACRES: 20

DIVISIBLE: NO
ZONING: INDUSTRIAL
OWNERSHIP: PRIVATE

FOR SALE/ LEASE: SALE OR
LEASE
PRICE PER ACRE \$34,500



INDUSTRIAL DEVELOPMENT SITE

JAKE WEIR

DIRECTOR, COMMERCIAL & INDUSTRIAL DEVELOPMENT

JAKE.WEIR@RJCORMAN.COM

C: 859-469-2560

RJCORMAN.COM/DEVELOPMENT

CURWENSVILLE INDUSTRIAL PARK

CURWENSVILLE, PA

LOCATION

Latitude, Longitude: 40.9694, -78.5158

County: Clearfield

PROPERTY DETAILS

Certification(s): Act 2 Statewide Health Standard attained

Due Diligence Conducted: Phase I and II ESA

UTILITY

Electric Provider / Details: Penelec / 3-phase

Water Provider / Details: Curwensville Municipal Authority / 6" main line with 3" meter

Sewer Provider / Details: Curwensville Municipal Authority / 8" Line

Gas Provider / Details: UGI / Unknown

Telecom Provider / Details: Breezeline / Cable

TRANSPORTATION

Nearest Highway / Distance: State Route 879 / 1 mile

Nearest Interstate / Distance: I-80 / 8 miles

Nearest Airport / Distance: DuBois Regional Airport (DUI) / 42 miles

Nearest Port / Distance: Port of Baltimore / 221 miles

R. J. CORMAN

Closest Distribution Center: Buffalo Material Sales Yard

Closest Transloading Facility: RJCP Terminal - Clearfield

Class I Interchange Partner(s): Norfolk Southern

Interchange Points(s): Cresson, Keating

Served by: RJCP

