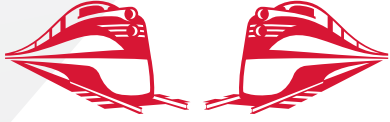


# Rj Corman

Railroad Company



## NORTHPARK LOGISTICS

CLARKSVILLE, TN

### OVERVIEW

**TYPE:** SITE AND BTS

**ACRES:** 200

**BUILDING SQ. FT:** 163,620

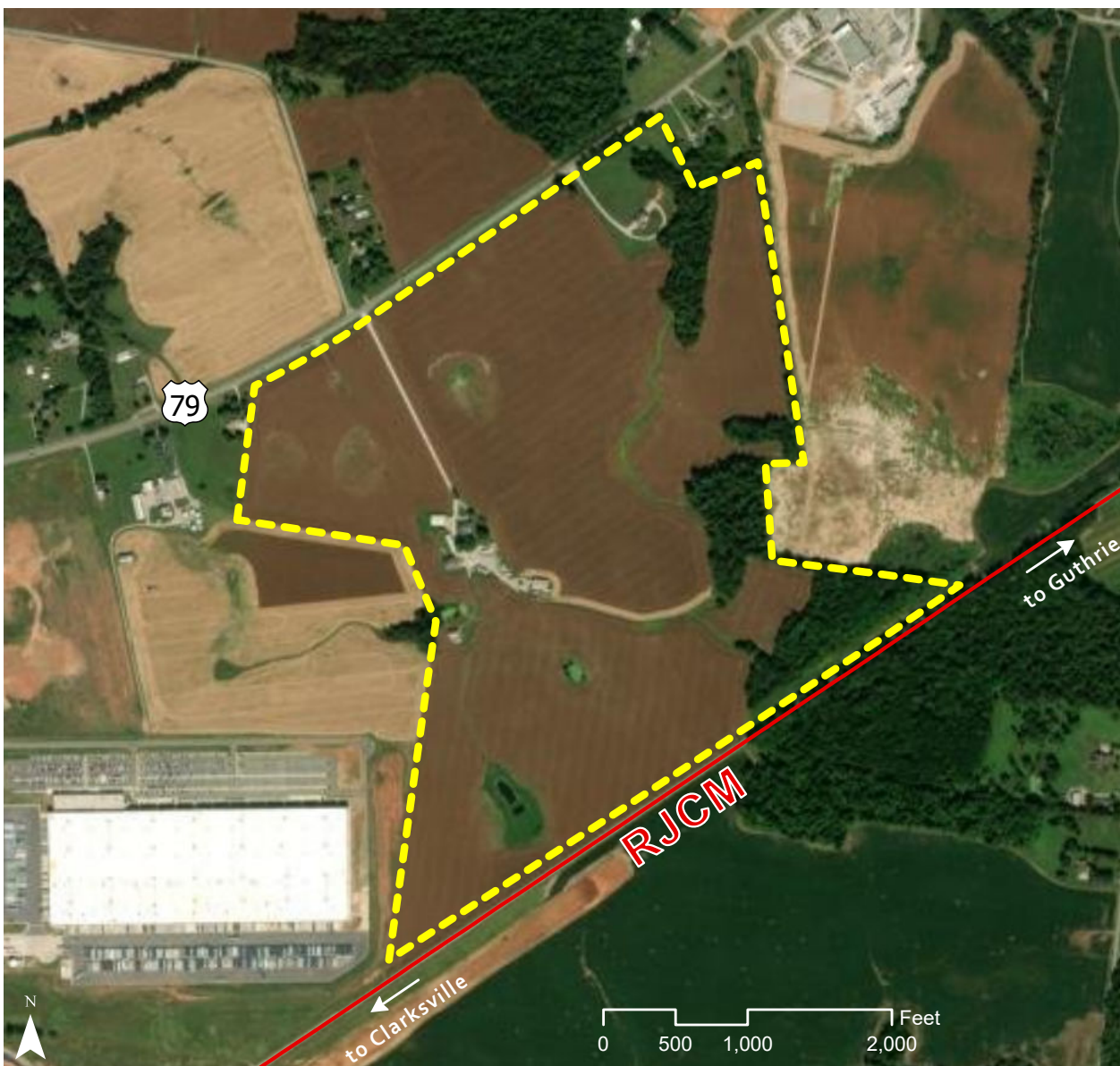
**DIVISIBLE:** YES

**ZONING:** INDUSTRIAL

**OWNERSHIP:** PRIVATE

**FOR SALE/ LEASE:** SALE OR  
LEASE

**PRICE PER ACRE** NEGOTIABLE



INDUSTRIAL DEVELOPMENT SITE

**JAKE WEIR**

DIRECTOR, COMMERCIAL & INDUSTRIAL DEVELOPMENT

JAKE.WEIR@RJCORMAN.COM

C: 859-469-2560

[RJCORMAN.COM/DEVELOPMENT](http://RJCORMAN.COM/DEVELOPMENT)

# NORTHPARK LOGISTICS

## CLARKSVILLE, TN

### LOCATION

**Latitude, Longitude:** 36.614711, -87.240817

**County:** Montgomery

### PROPERTY DETAILS

**Under Roof:** 163,620 Building SF Initially,  
2M SF (Total) Planned

**Due Diligence Conducted:** ALTA Survey, Geotech,  
Environmental, Grading, Site Plans

### UTILITY

**Electric Provider / Details:** Clarksville Electric  
Membership Corporation / Available to site

**Water Provider / Details:** Clarkville Gas and Water /  
Available to site

**Sewer Provider / Details:** Clarkville Gas and Water /  
Available to site

**Gas Provider / Details:** Clarkville Gas and Water / Available to site

**Telecom Provider / Details:** Multiple Providers / Available to site

### TRANSPORTATION

**Nearest Highway / Distance:** Hwy 79 / Direct access

**Nearest Interstate / Distance:** I-24 / 2.6 miles

**Nearest Airport / Distance:** Nashville International (BNA) / 45 miles

**Nearest Port / Distance:** Winn Materials / 5 miles

### R. J. CORMAN

**Closest Distribution Center:** Clarksville Distribution Center

**Closest Transloading Facility:** South Union

**Class I Interchange Partner(s):** CSX

**Interchange Points(s):** Guthrie

**Served by:** RJCM

