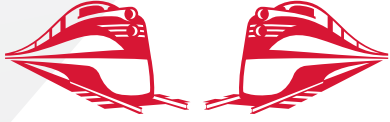


RJ Corman

Railroad Company



STEWART-HOUSTON INDUSTRIAL PARK - SITE A

CUMBERLAND CITY, TN

OVERVIEW

TYPE: SITE

ACRES: 45

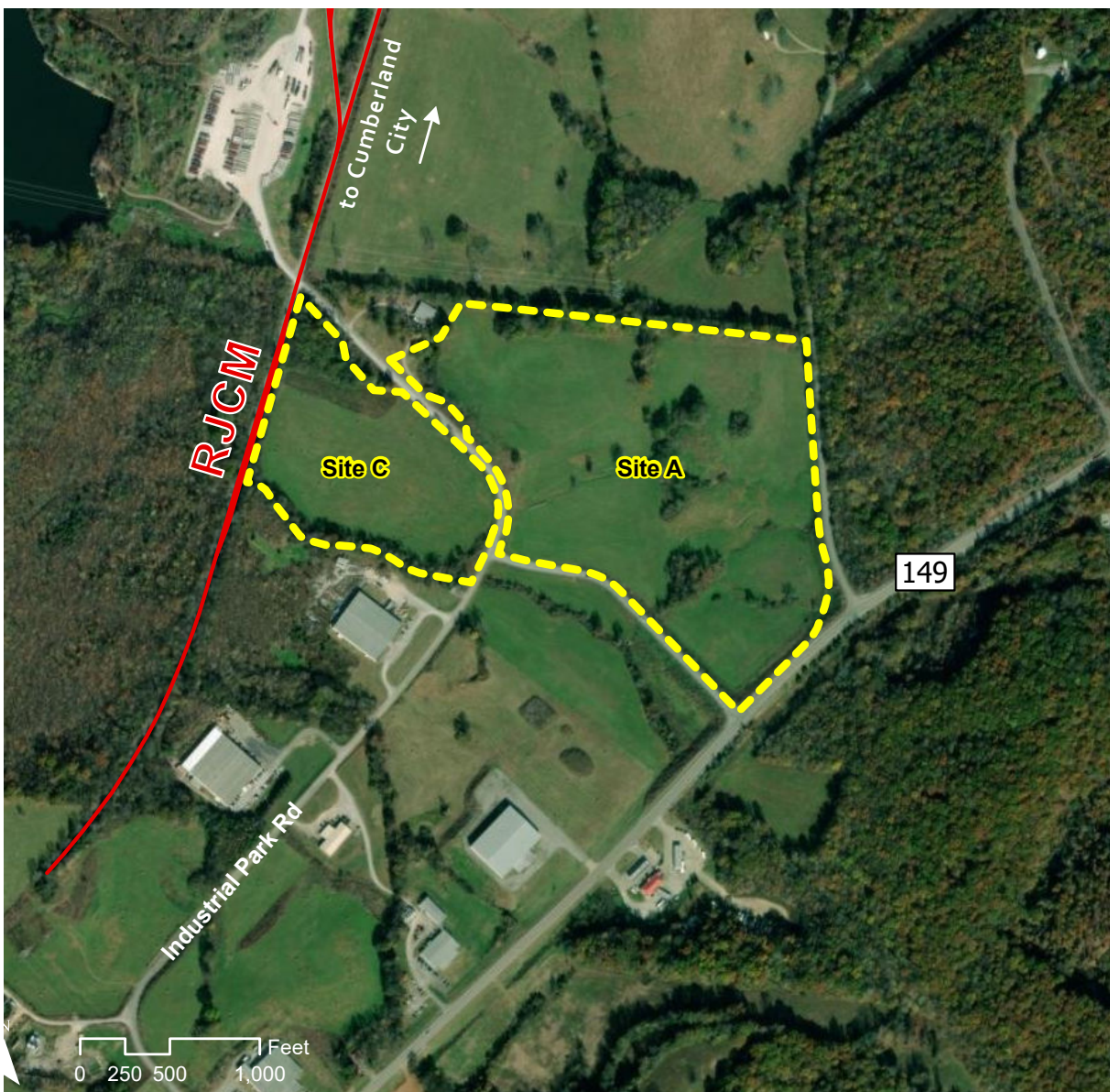
DIVISIBLE: NO

ZONING: INDUSTRIAL

OWNERSHIP: PUBLIC

FOR SALE/ LEASE: SALE

PRICE PER ACRE NEGOTIABLE



INDUSTRIAL DEVELOPMENT SITE

JAKE WEIR

DIRECTOR, COMMERCIAL & INDUSTRIAL DEVELOPMENT

JAKE.WEIR@RJCORMAN.COM

C: 859-469-2560

RJCORMAN.COM/DEVELOPMENT

STEWART-HOUSTON INDUSTRIAL PARK - SITE A

CUMBERLAND CITY, TN

LOCATION

Latitude, Longitude: 36.3740, -87.6441

County: Stewart

PROPERTY DETAILS

Due Diligence Conducted: Environmental

Certification(s): Select Tennessee Certified Site

UTILITY

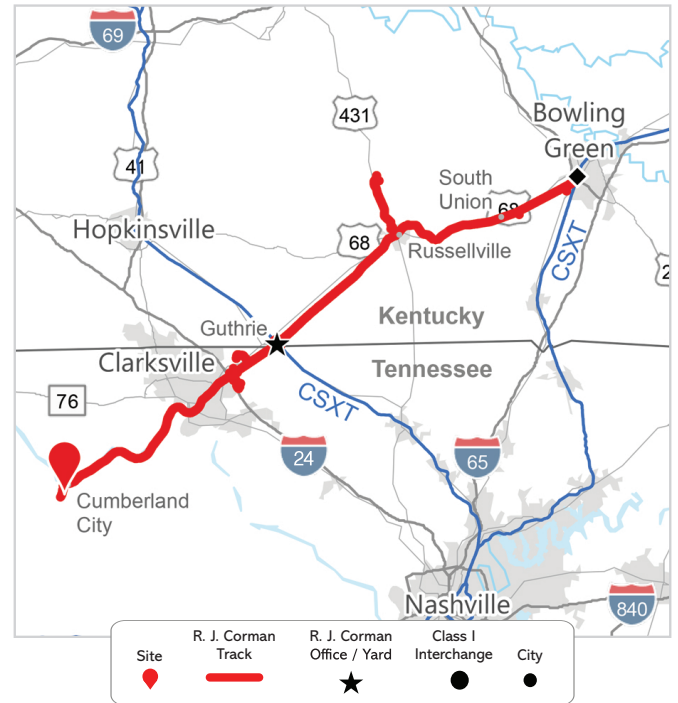
Electric Provider / Details: Cumberland EMC / Meriwether Lewis EMC / 3 phase on site; 14.4 kV

Water Provider / Details: City of Erin / 12" line adjacent to site

Sewer Provider / Details: City of Erin / 12" gravity line adjacent to site

Gas Provider / Details: Greater Dickson Gas Authority / 4", 6", and 12" lines available; 150-650 psi

Telecom Provider / Details: Cumberland Connect, Meriwether Lewis EMC / On site



TRANSPORTATION

Nearest Highway / Distance: SR 149 / Adjacent

Nearest Interstate / Distance: I-24 / 28 miles

Nearest Airport / Distance: Nashville International (BNA) / 56 Miles

Nearest Port / Distance: Nashville-Cumberland River / 70 miles

R. J. CORMAN

Closest Distribution Center: Clarksville Distribution Center

Closest Transloading Facility: South Union

Class I Interchange Partner(s): CSX

Interchange Points(s): Guthrie

Served by: RJCM

