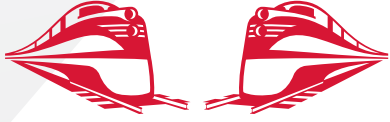


Rj Corman

Railroad Company



GENERAL PRODUCTS BUILDING RUSSELLVILLE, KY

OVERVIEW

TYPE: BUILDING

ACRES: 23.8

BUILDING SQ. FT: 112,885

DIVISIBLE: NO

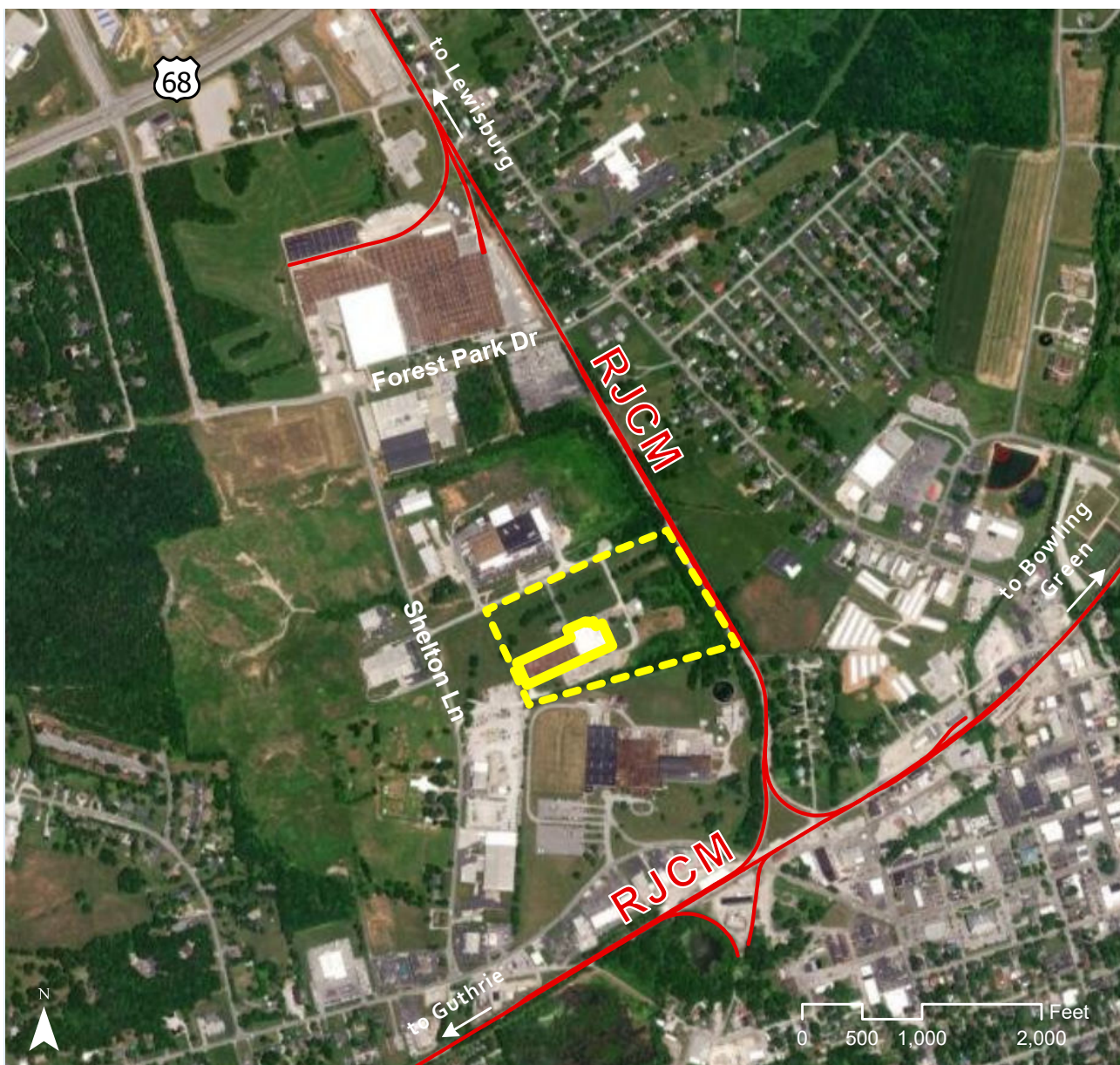
ZONING: HEAVY

INDUSTRIAL (I2)

OWNERSHIP: PRIVATE

FOR SALE/LEASE: SALE/LEASE

PRICE PER ACRE: UPON REQUEST



INDUSTRIAL DEVELOPMENT SITE

JAKE WEIR

DIRECTOR, COMMERCIAL & INDUSTRIAL DEVELOPMENT

JAKE.WEIR@RJCORMAN.COM

C: 859-469-2560

RJCORMAN.COM/DEVELOPMENT

GENERAL PRODUCTS BUILDING

RUSSELLVILLE, KY

LOCATION

Latitude, Longitude: 36.8497, -86.8997

County: Logan

PROPERTY DETAILS

Under Roof: 112,885 SF

Ceiling Height: 22'-27'

Concrete Pad: 6" concrete floors

Office Space: 9,951 SF

UTILITY

Electric Provider / Details: Russellville Electric

Plant Board / On Site; 3-phase

Water Provider / Details: City of Russellville

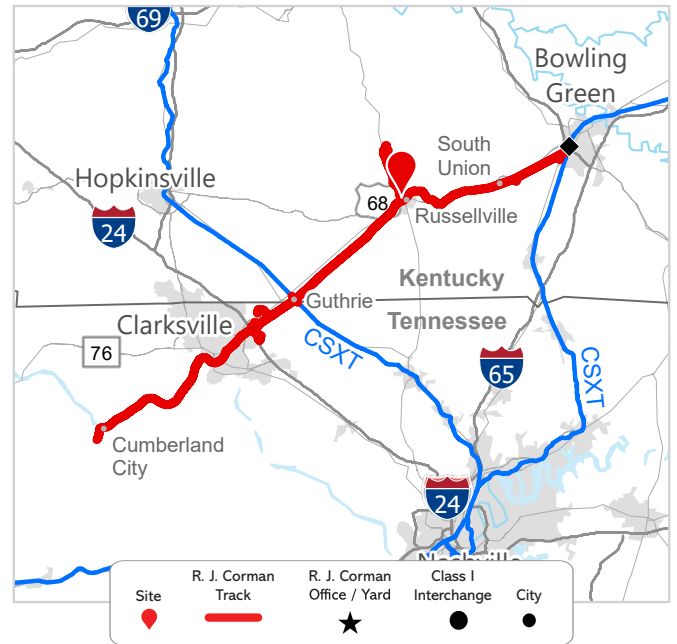
(Logan/Todd Regional Water Commission) / On Site; 10" water line

Sewer Provider / Details: City of Russellville Sewer / On Site; 8" sewer line

Gas Provider / Details: Atmos Energy Corporation / On Site; 4" line

Telecom Provider / Details: Russellville Electric Plant Board / Service is readily available;

Fiber Speed: 1Gbps



TRANSPORTATION

Nearest Highway / Distance: US Hwy 68 / 1.1 miles

Nearest Interstate / Distance: I-65 / 31 miles

Nearest Airport / Distance: Nashville International Airport (BNA) / 60 miles

Nearest Port / Distance: Owensboro Riverport / 75 miles

R. J. CORMAN

Closest Distribution Center: South Union

Closest Transloading Facility: South Union

Class I Interchange Partner(s): CSX

Interchange Points(s): Bowling Green

Served by: RJCM



JAKE WEIR DIRECTOR, COMMERCIAL & INDUSTRIAL DEVELOPMENT

JAKE.WEIR@RJCORMAN.COM

C: 859-469-2560

RJCORMAN.COM/DEVELOPMENT